

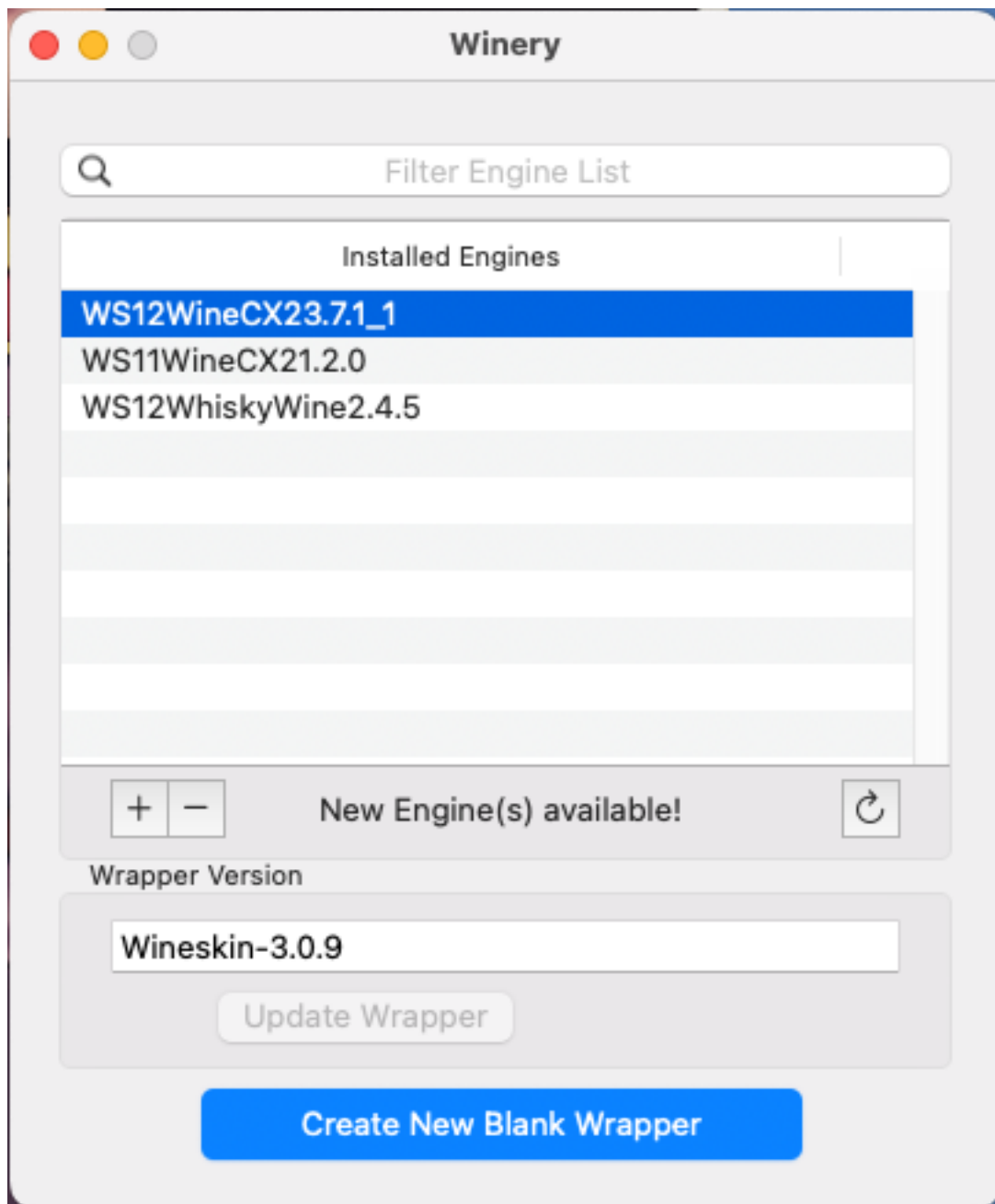
bizhawk

(Work in progress, a bunch of things are still janky. -rax)

Hey Mac users! You can autotrack with EmoTracker and BizHawk under WINE. The most annoying part is manipulating a couple of menus once per session.

Install kegworks. ([link to instructions for doing so](#))

Open Kegworks and Create New Blank Wrapper.



Choose a name for the wrapper and hit OK. This will take a minute. I made one for BizHawk and one for EmoTracker. You can run them both in the same wrapper, but the way I found of doing that was a

little janky.

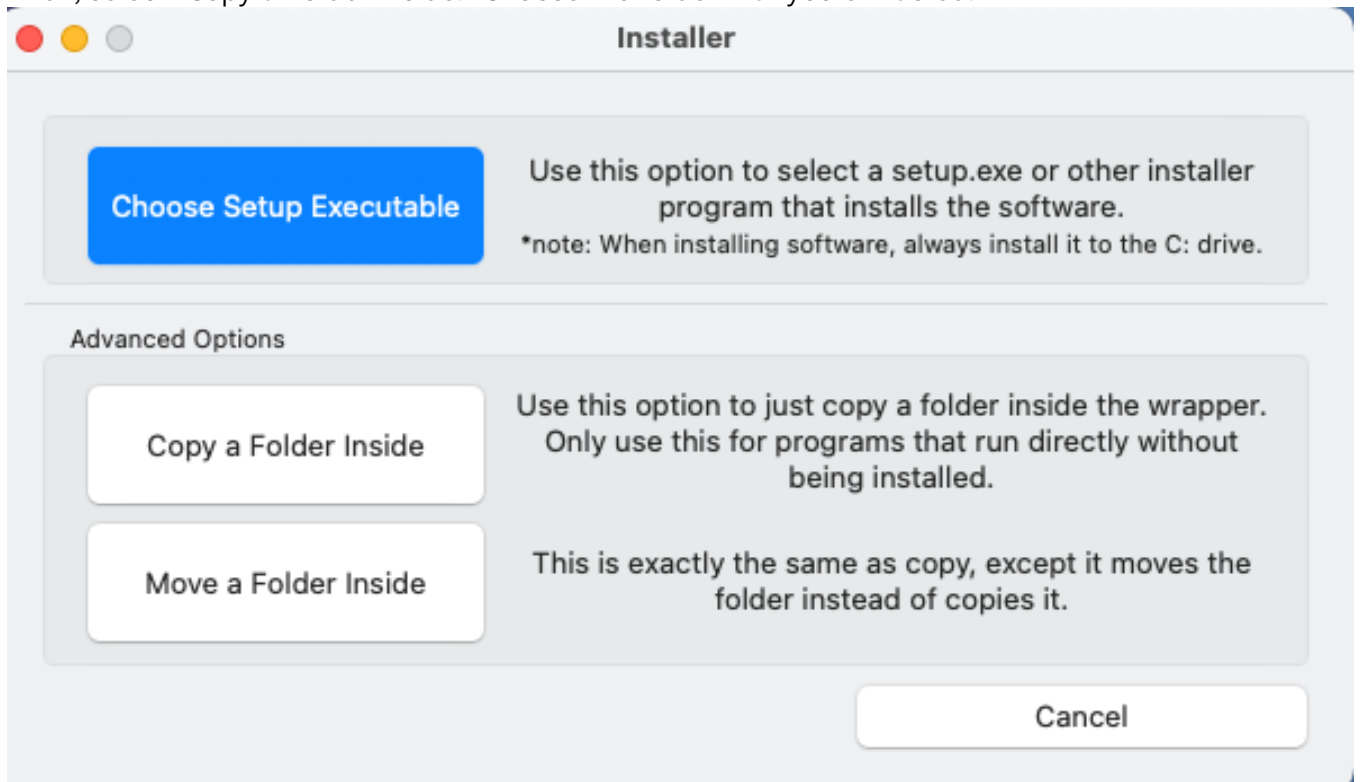
When you first open a wrapper, it will offer a few options. You want to select Install Software.



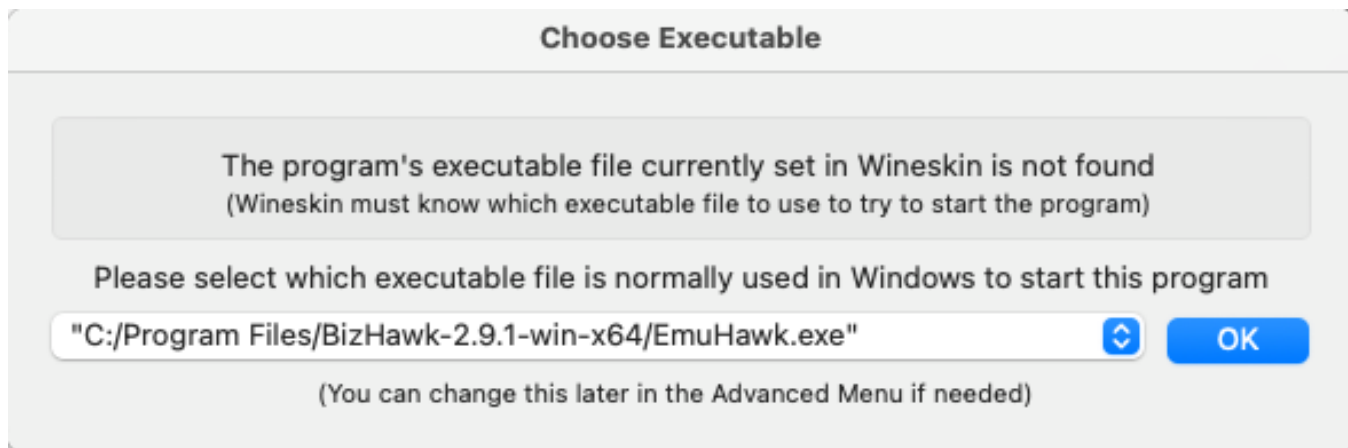
To install BizHawk in the wrapper:

First, extract the BizHawk archive from their website under MacOS.

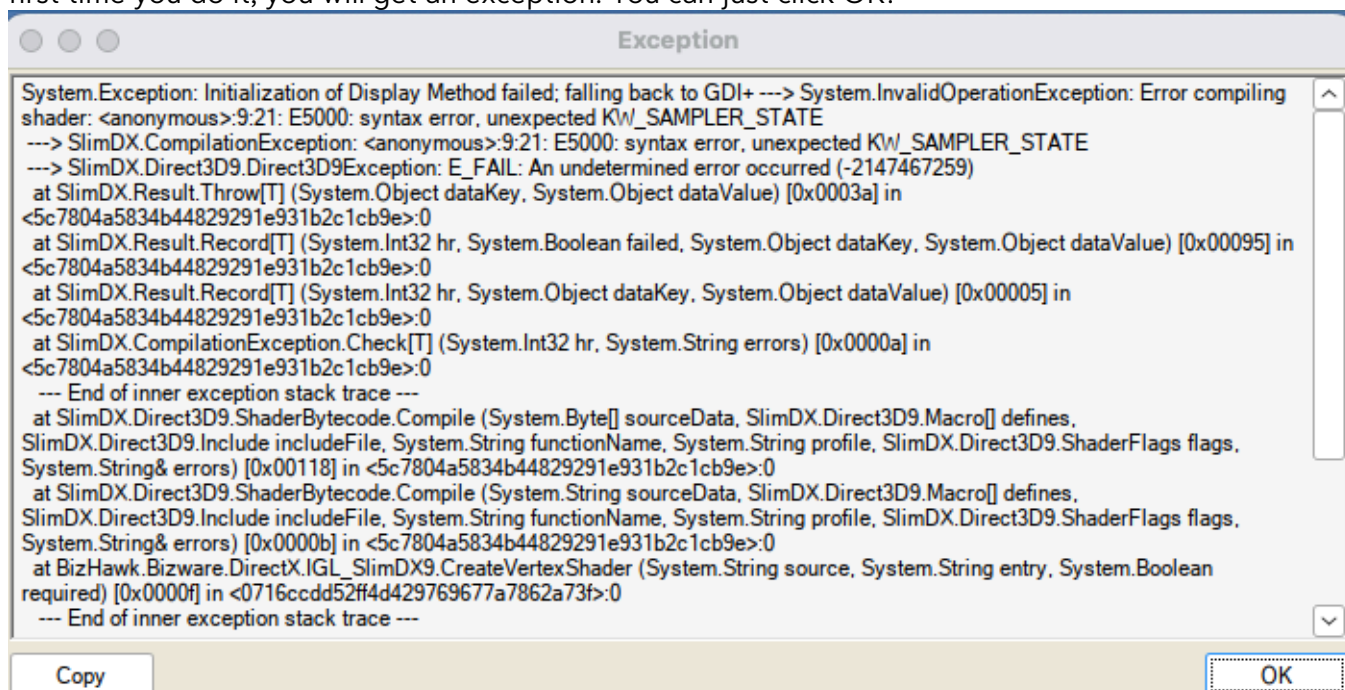
Then, select "Copy a Folder Inside." Choose the folder that you extracted.



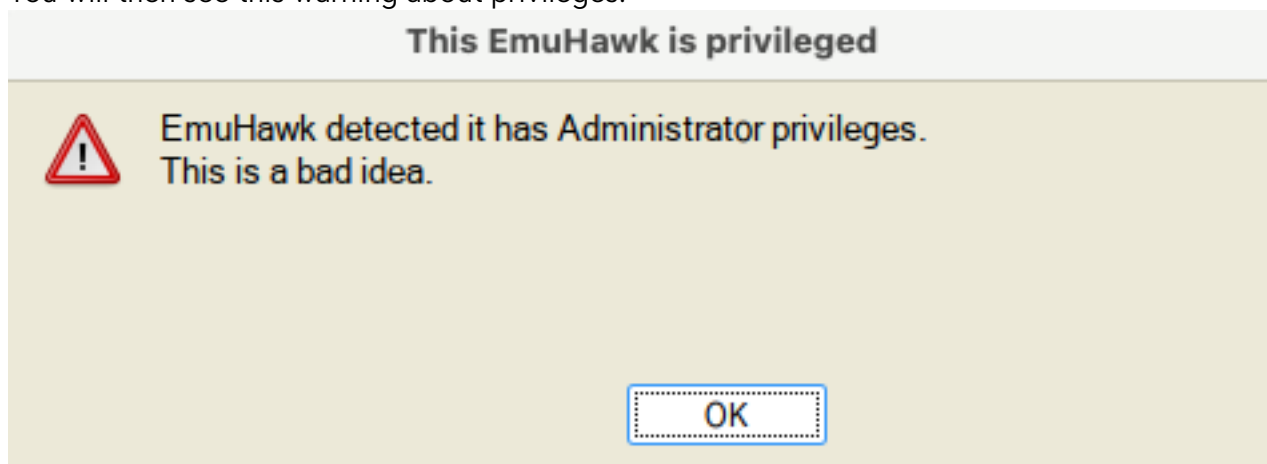
Wineskin should identify the application, but if it doesn't, you can set it like this.



Now you can quit the Wineskin, and then run the Wineskin application BizHawk that you created. The first time you do it, you will get an exception. You can just click OK.



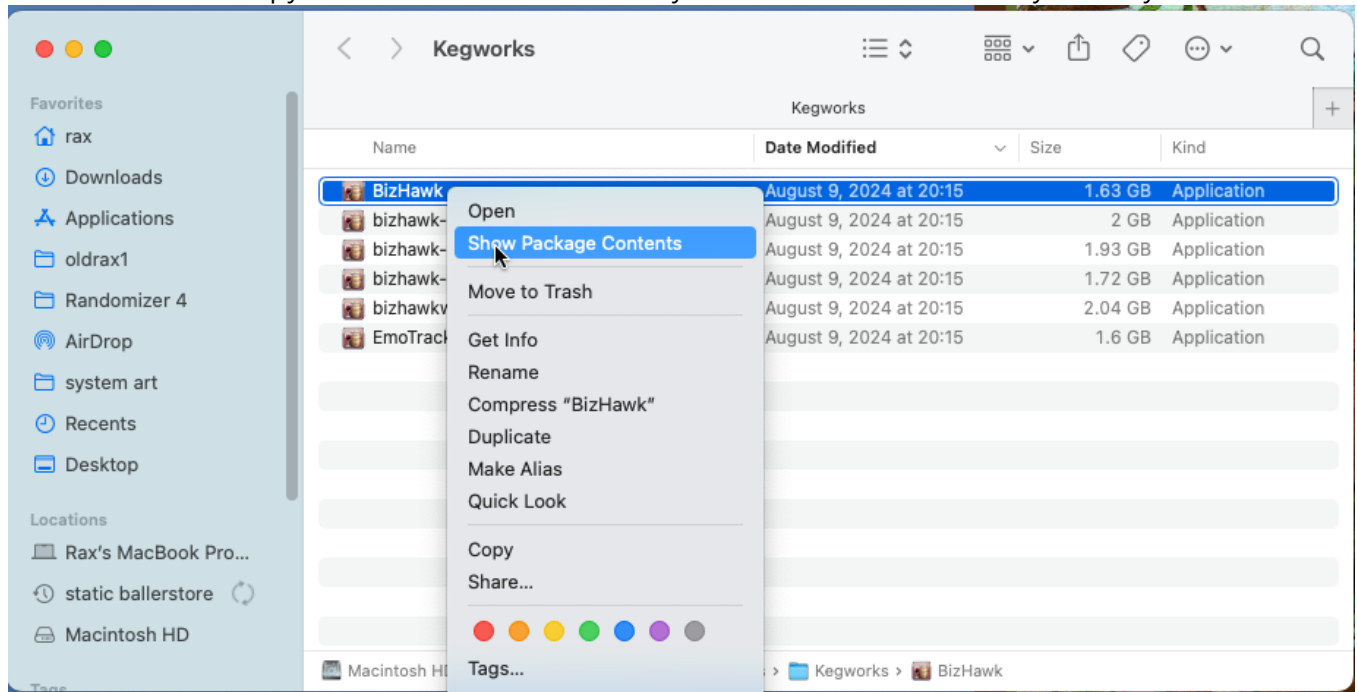
You will then see this warning about privileges:



I believe you don't have to worry about that message (it has admin privileges inside the Wineskin, but you don't care about that). However, I am not a computer security professional and this is not computer security advice.

Now you have a running BizHawk! We'll come back to that.

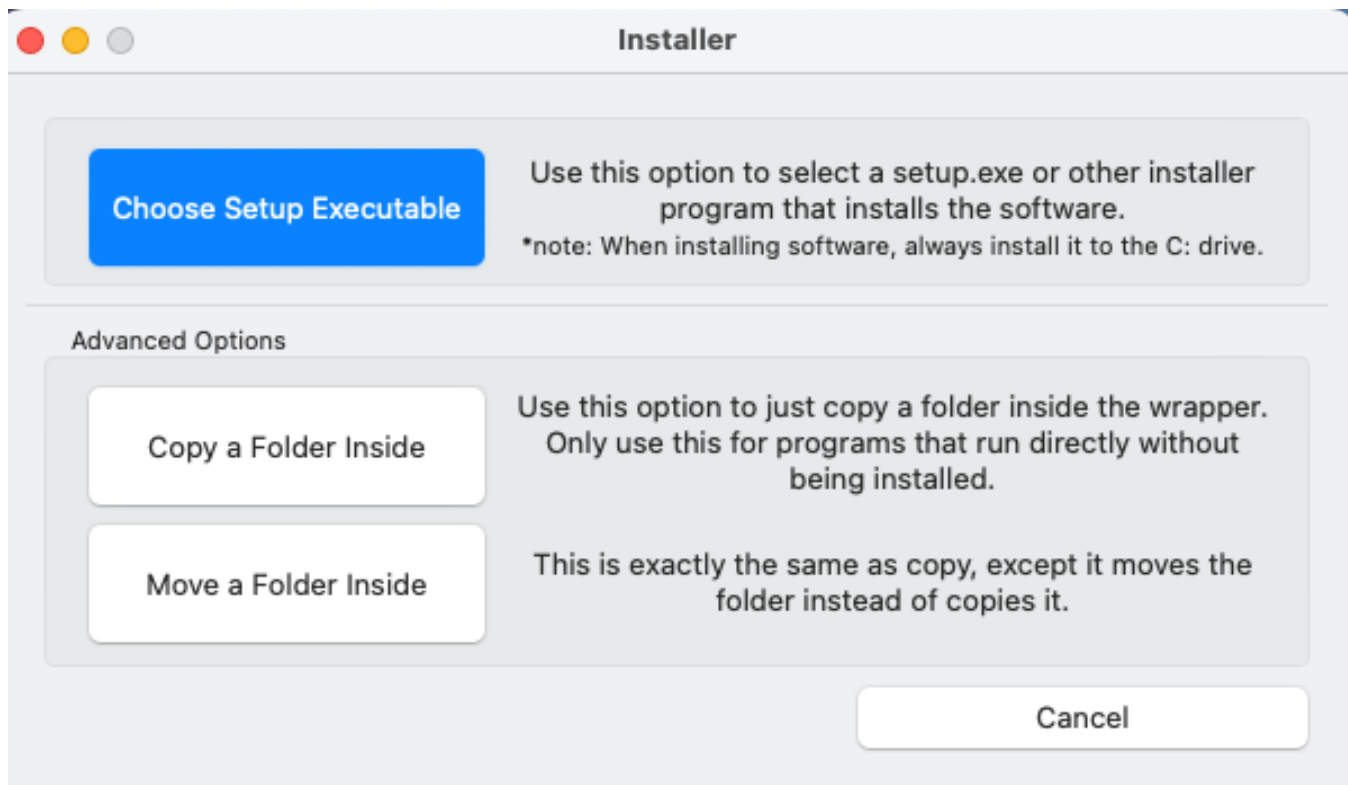
Now you need to get the newest version of the BizHawk connector into your wineskin. You'll need the whole Connector-2.9 directory out of the zipfile where you got the connector. Right-click the BizHawk wineskin and select "Show Package Contents," and then go down into Contents > drive_c > Program Files > BizHawk. Copy that Connector-2.9 directory into the BizHawk directory. Hooray! You did it.



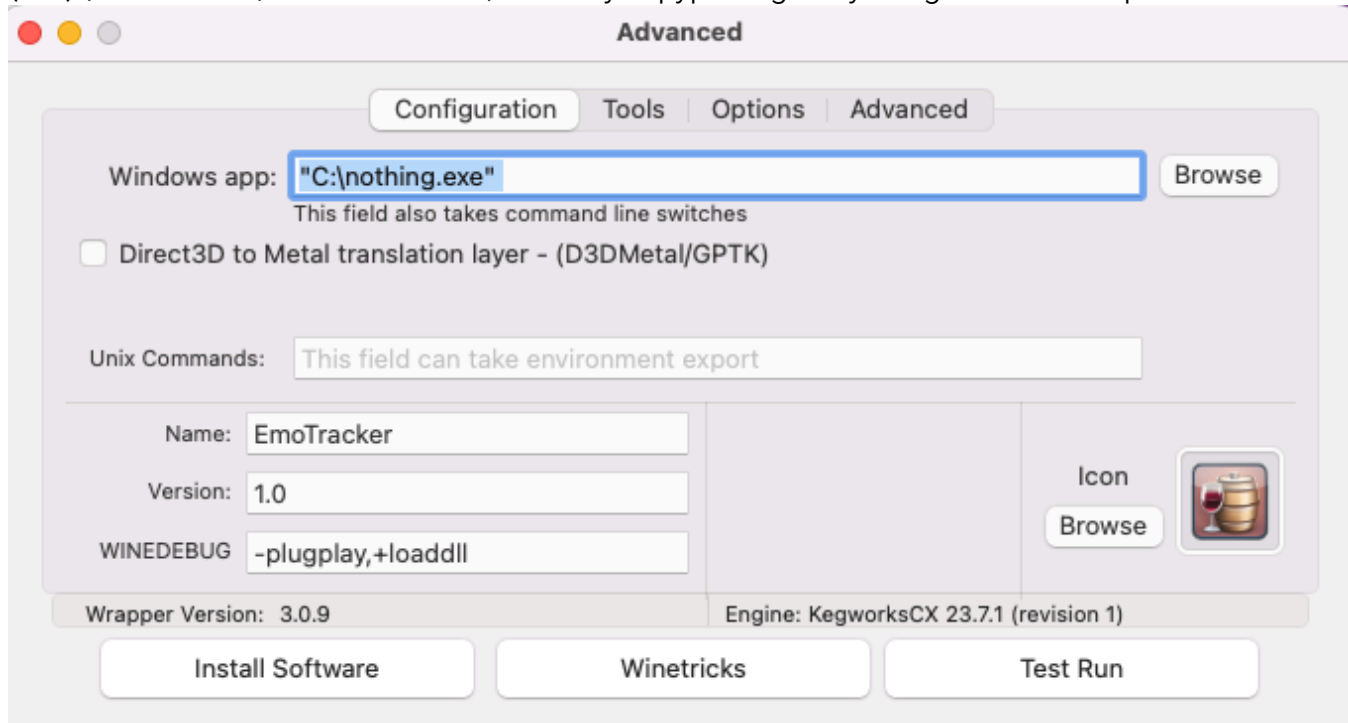
To install EmoTracker:

EmoTracker has an installer, emotracker_setup.exe.

You can use the "Choose Setup Executable" option to run it. You can install with all defaults. Don't run EmoTracker immediately on install, just finish and let Kegworks do some processing for a bit.



Sometimes this process hangs. If it does, you can go into the contents of the wineskin like you did for BizHawk, select Contents > Wlneskin, and then select Advanced. You might have nothing.exe set as your windows app — if you do, like this, set it to "C:\Program Files (x86)\EmoTracker\EmoTracker.exe", either by copypasting or by using the Browse option.



Sometimes you can get it to run from MacOS directly like this, but in my current test, I can't, so I have gone into that Advanced menu and selected "Test Run." THEN it works. Sure, okay.

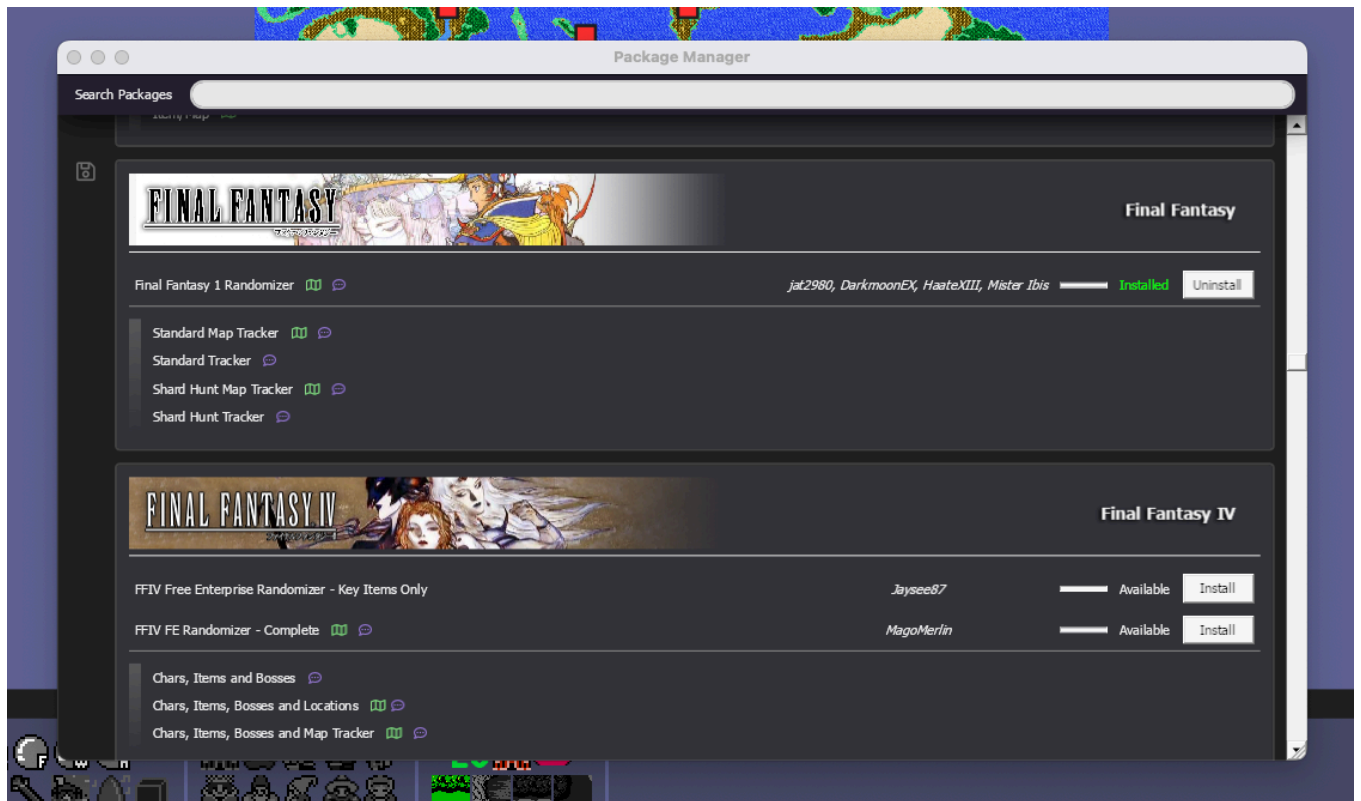
Now you have a running instance of EmoTracker!

EmoTracker has a number of buttons that won't display under Wine due to a font issue. (If you know more about Wine and fonts than I do, feel free to reach out, I can tell you more about the issue and what I've tried.) On the top bar, you have access to three invisible buttons, roughly here:



Button 1 will open a menu when you click it. It may take a minute and load slowly — you can navigate it with your arrow keys once you've opened it. (You also probably won't need this menu.)

Button 2 will open up an installer for EmoTracker modules when you click it. You should do this once and find the FFR package by scrolling down, and click Install.



Button 3 is a reset and will reset any tracking you've done.

Button 4 is a one by one pixel that you will have to find in a minute. Sorry.

To do that, you are going to have to figure out how you can right-click in EmoTracker with your personal Mac, mousing device, and configuration. Control-clicking will not work. You will need to do something that MacOS parses as "Secondary Click." I've attached a few screenshots of how I did this with different pointing devices I have. Your mileage may vary!

KensingtonWorks

Bind to Cloud

All Applications

BUTTONS

POINTER


SCROLLING

No Action

Middle Click

Left Click

No Action



Play/Pause

Left Click

Close

Mouse & Keyboard

Video Conferencing

Snippet

Navigation

Media

Web Browser

Editing

Mission Control

Application

System

Keyboard Shortcut

Left Click

Right Click

Select Right Click or a valid key combination of Right Click key and modifier key(s) to set a shortcut.

Modifier Keys

Cmd

Opt

Shift

Ctrl

Label

Middle Click

Left Drag

Right Drag

Restore Defaults

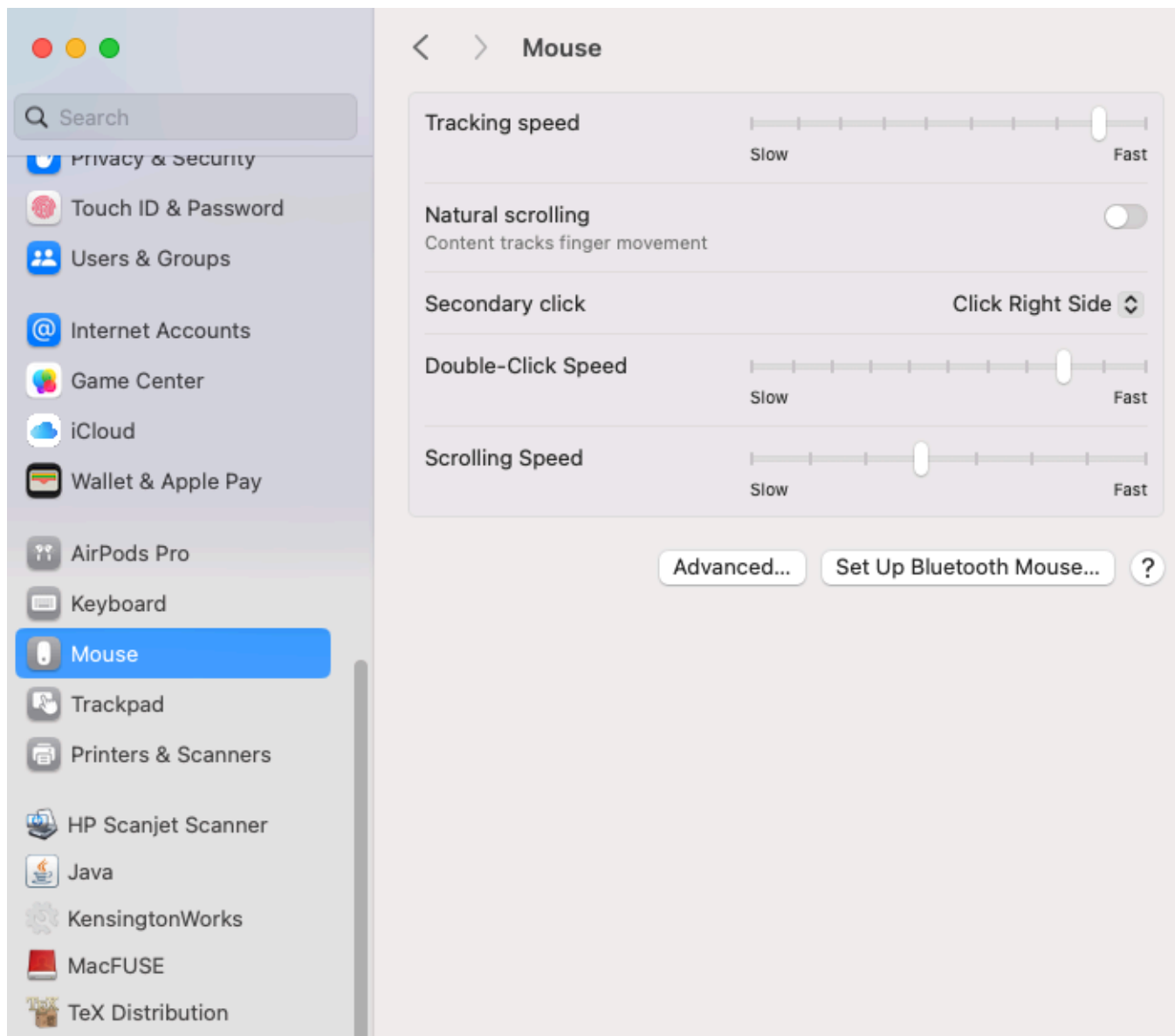
Save

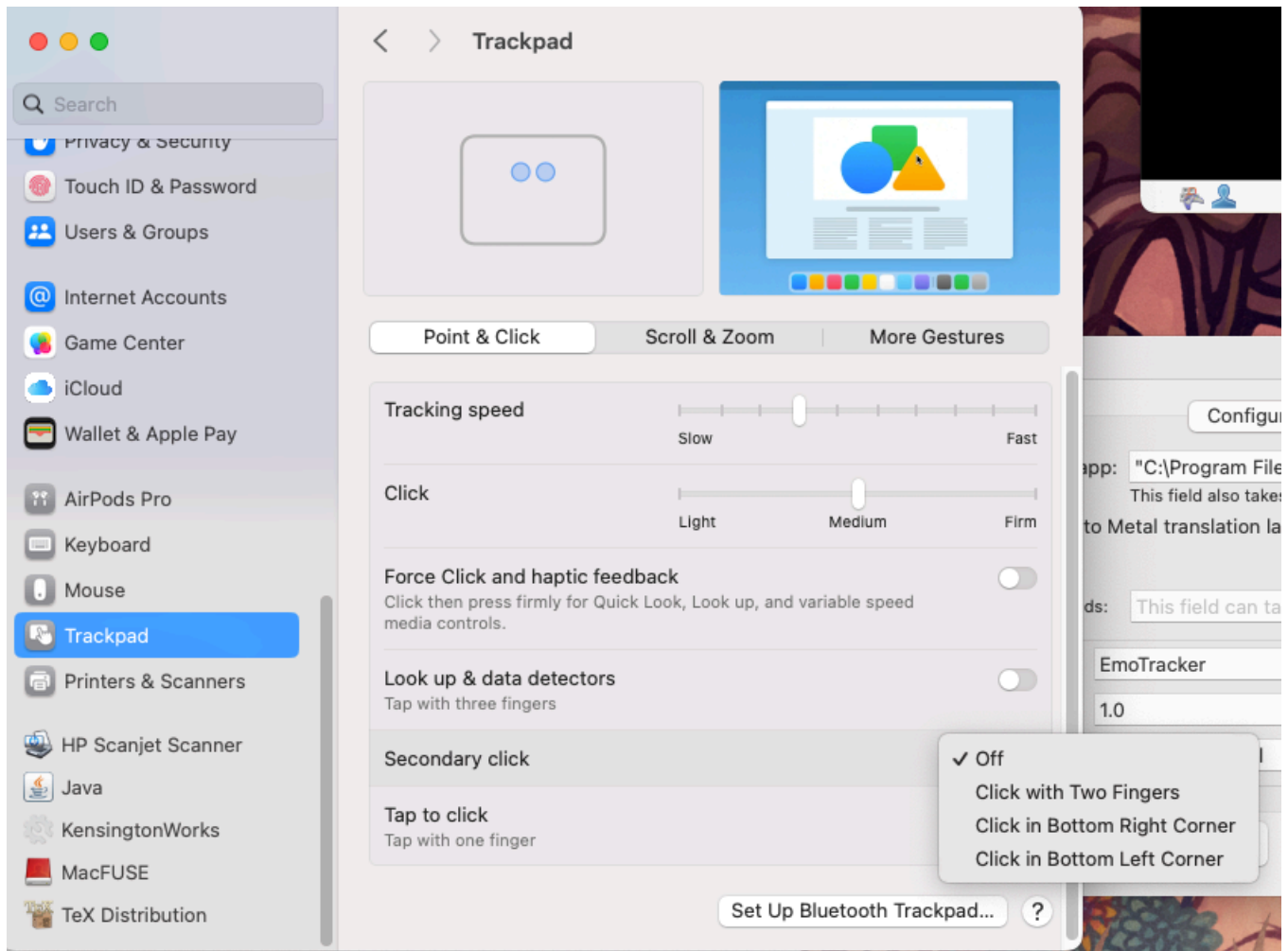
Expert Mouse® Wireless Trackball

Status |

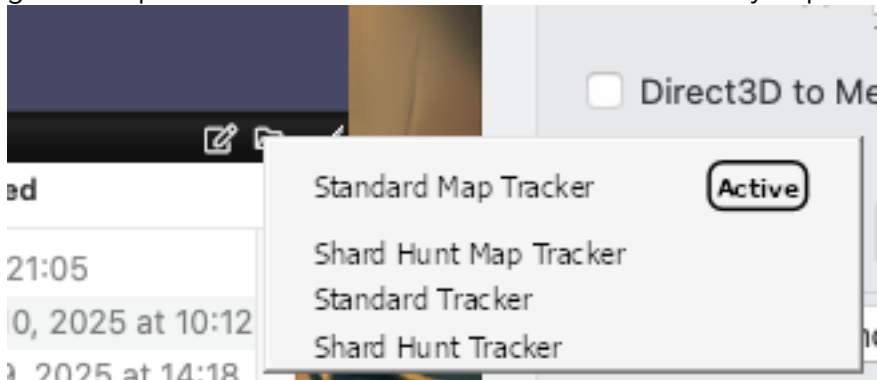
Reset All

v3.0.4

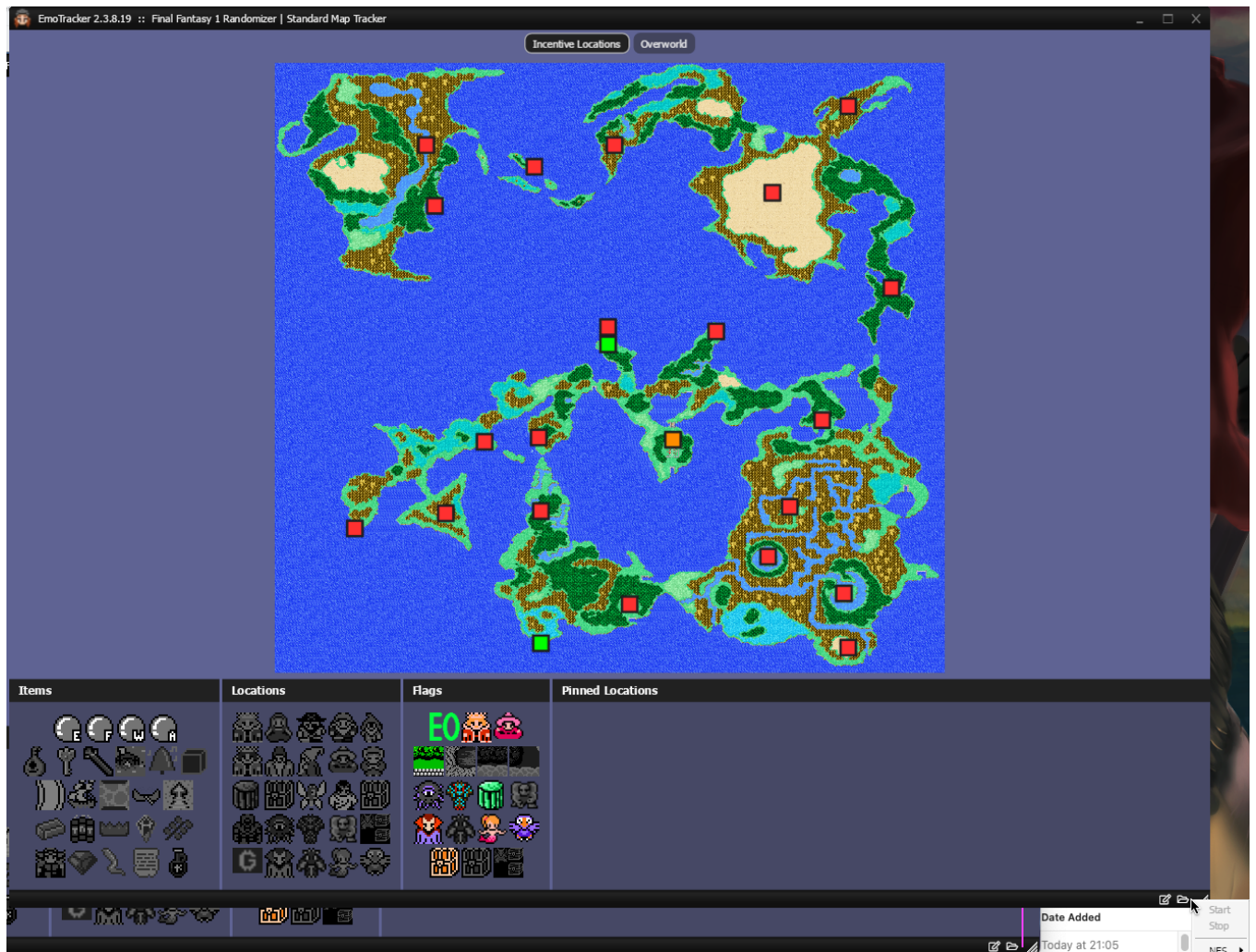




To make sure this worked, secondary click the folder icon on the bottom of the window. You should get four options — feel free to choose the tracker mode you prefer!



Now it's time to right-click in the area between the folder icon and the "drag to change window size" icon until you get a menu. This process is annoying as heck, but once you find it a few times, it's not too bad. You want to select NES > Lua ; this is often easier to do with the arrow keys. Congrats! Your EmoTracker is now listening for a BizHawk to connect to! So let's give it one.



Go back to EmoTracker and select Tools > Lua Console and then Script > Open Script. Then select the connector.lua file from the directory you put in place earlier. You should see “Emulator not running” in the Lua console. Open up a ROM in BizHawk!

It should look like this:



Now, play FFR. It should autotrack. But... sometimes it doesn't. I haven't figured that part out yet.